

Italian Sustainability Day 2020

ASTM Group

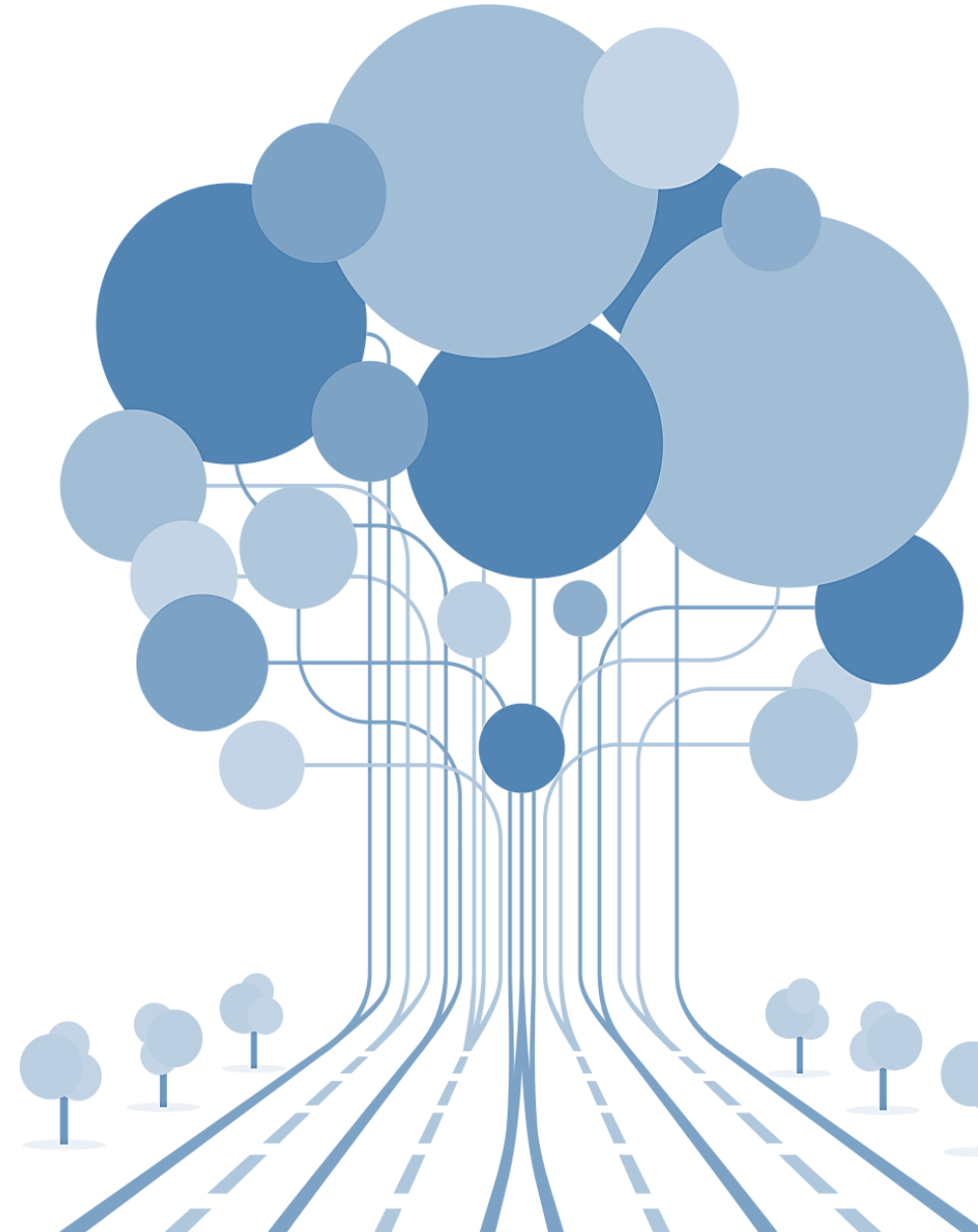
July 3rd 2020





Agenda

- **Financial Figures**
- ESG Strategy
- 2019 Sustainability Report





ASTM Group Profile

- **ASTM Group is a global player in the design, construction and management of major infrastructural projects.**
- **The Group is the second largest operator in the construction and management of toll motorway concessions.**

We connect ideas, people and goods, guaranteeing growth, safety and quality for our global stakeholders.





Our vision

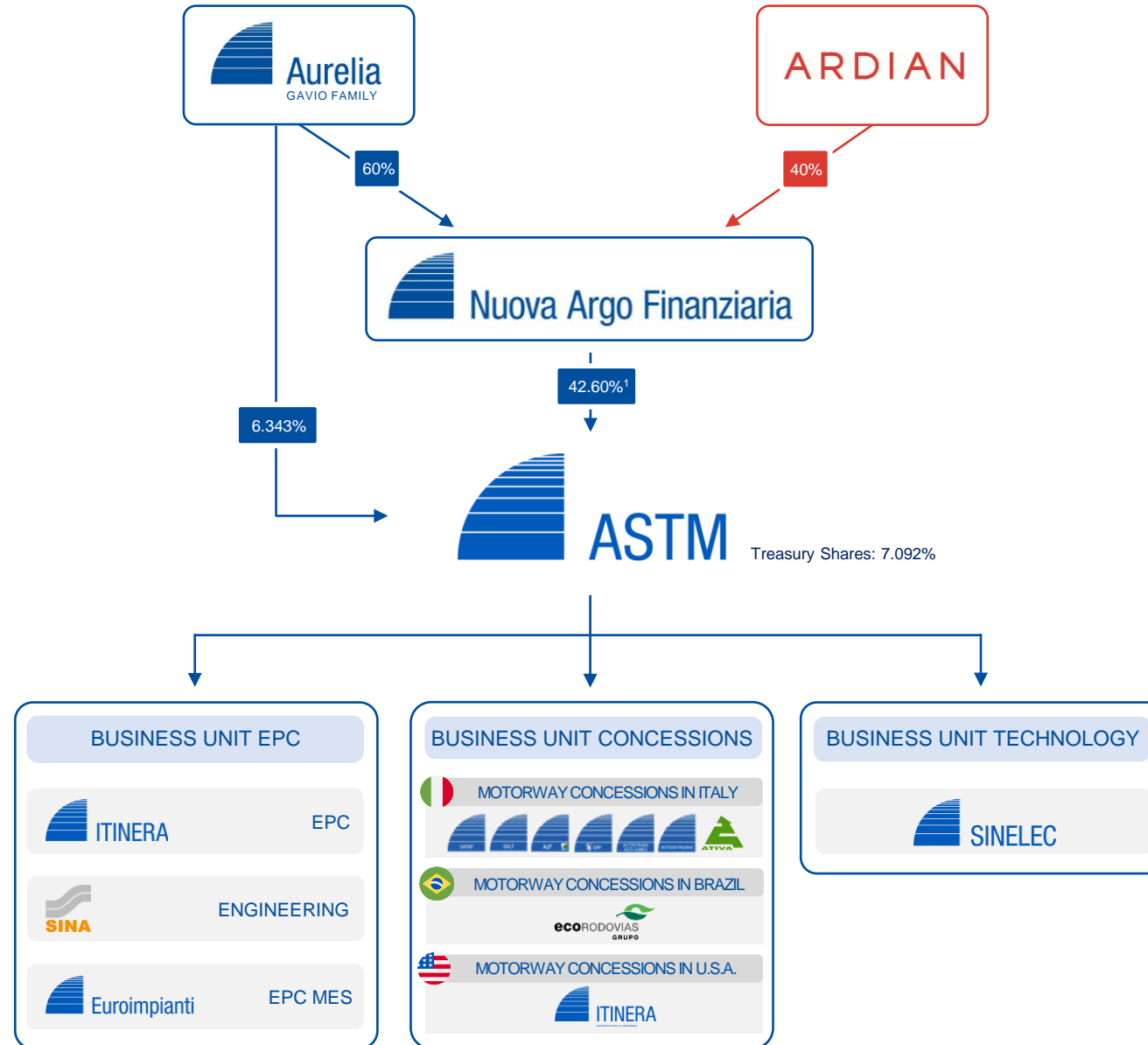
Three business units,
ONE COMPANY, with
Concessions at the core.

An **integrated business model**, based on **synergies**,
to develop **business opportunities** in an
increasingly competitive
global scenario.





ASTM Group Structure as at 31.12.2019



¹ Including 1.386% through Nuova Codelfa



ASTM 2019 Snapshot

8,526

employees &
collaborators
(December 31st 2019)

€ 3.8 bn

Market
Capitalization
(December 31st 2019)

€ 2,071 m

Revenues

€ 792 m

EBITDA

€ 170 m

Group Net Income ADJ

€ 614 m

Funds From
Operations (FFO)

€ 4.3 bn

Capital
Employed

€ 1.352 bn

Net Financial
Position
(1,7x EBITDA)

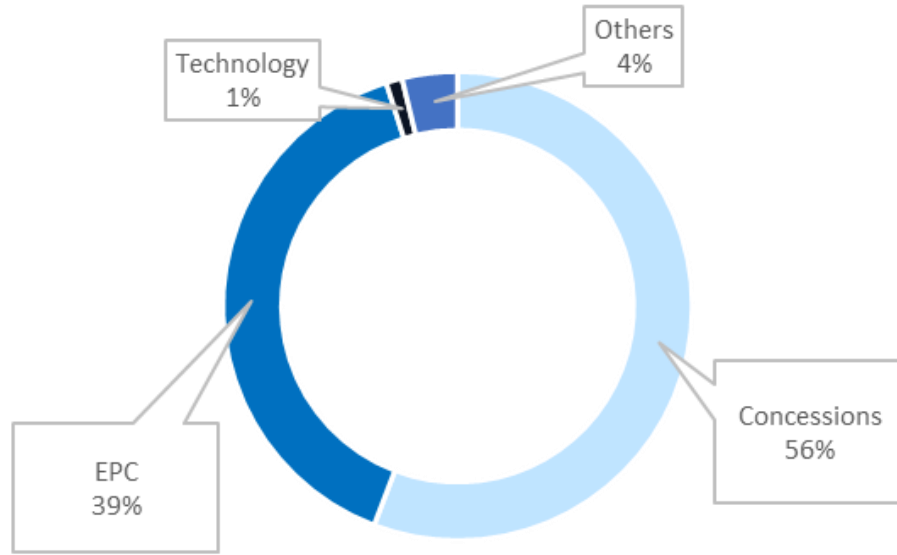
€ 3.0 bn

Equity

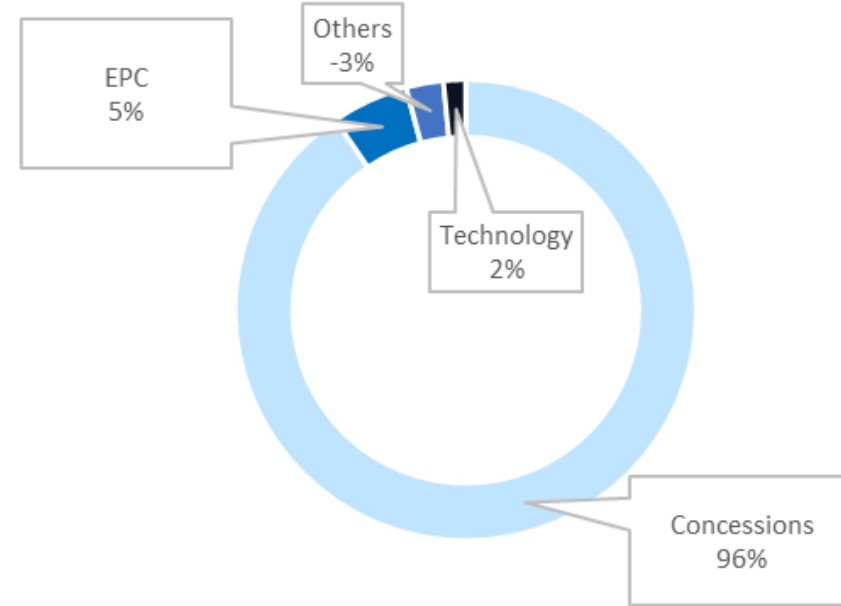


2019 results by segment

Revenues by Segment



EBITDA by Segment



	REVENUES			EBITDA		
	2018	2019	Chg.%	2018	2019	Chg.%
Concessions	1,135	1,155	+2%	736	757	+3%
EPC	513	813	+58%	32	45	+41%
Technology	20	23	+16%	13	13	--
Holdings & Others	49	79	+62%	(20)	(23)	+14%
Total	1,717	2,071	+21%	761	792	+4%



IQ 2020 highlights

Key Figures	2019	2020	Chg.%
Toll roads Revenues (mln €)	251	234	- 6.82% ↓
Traffic (mln veichles/km)	2,344	2,224	- 5.15% ↓
Toll roads Investments (mln €)	49.2	70.8	+ 43% ↑
Net debt reported	(1,352)	(1,422)	-€70m

Brazilian traffic (thousands of equivalent paying vehicles)	84,446	90,014	+ 6.6% ↑
Itinera revenues (mln €)	210	253	+ 20% ↑



A global player

ASTM Group is **the second largest motorway operator in the world** in terms of kilometers managed, with approx. **4,600 km under management** in Italy, Brazil and the UK.



1,423 km
13 Concessions

Main motorway operator in the **North-West of Italy**, one of the wealthiest areas in Europe, representing **23% of the national grid**



3,086 km
10 Concessions

EcoRodovias, the second biggest motorway operator in Brazil, jointly controlled with **CR Almeida**



84 km
1 Concession

Newcastle-Carlisle (A69), a major Northern trunk road in England, jointly managed with **RoadLink Holding**



A new company with the purpose of investing in the **PPP concession projects** in the United States.



The motorway network in Italy

Direct Investments

Company	Concessions	Stake	Maturity	FY19 EBITDA (€m)	vs 2018	Estimated TV at the end of concession (€m)
SATAP	A4: Torino – Milano	99.87%	Dec-26	220	+3,7%	888 ¹
	A21: Torino – Piacenza		Jun-17	133	+3,6%	146
SALT	A12: Sestri Levante-Livorno	95.23%	Jul-19	123	+0,05%	256
	A15: La Spezia-Parma		Dec-31	66	+3,02%	-
SAV	A5: Quincinetto-Aosta	71.28%	Dec-32	46	-2,58%	-
ADF	A10: Savona-Ventimiglia	73.00%	Nov-21	102	3,56%	180 ²
	A6: Torino-Savona		Dec-38	35	-7,37%	-
ASTI-CUNEO	A33: Asti-Cuneo	65.00%	Dec-31	3	+3,13%	345 ¹
AUTOVIA PADANA	A21: Piacenza-Brescia	51.00%	Feb-43	30	+32,3% ³	-
ATIVA	A4-A5: Tangenziale di Torino	72,34%	Aug-16	77	+2,9%	160

Equity Investments

Company	Concessions	Stake	Maturity	FY19 EBITDA (€m)	vs 2018	TV (€m)
SITAF	A32-T4: Traforo del Frejus Torino-Bardonecchia	47,80%	Dec-50	92	+6,9%	-
TE	A58: Tangenziale esterna di Milano	48.30% ⁴	Apr-65	44	+11,6%	-
SITRASB	T2: Traforo del Gran San Bernardo	36.50%	Dec-34	4	+3,3%	-

- 1) Current estimation under Cross Financing Plan and approved by CIPE, May 14th, 2020
- 2) Maximum amount as set in the public tenders
- 3) Concession started on March 1st 2018
- 4) Looking through including TEM and TE stake



The motorway network in Brazil

Jointly with CR Almeida, the Group controls **EcoRodovias Infraestrutura e Logística SA**, the third biggest motorway operator in Brazil, listed on the Brazilian stock market.





EcoRodovias Key Figures 2019



**\$R 3.0
billion**
Revenues



**\$R 2.0
billion**
EBITDA



**\$R 290
million**
Net Income



~3,700
Employees



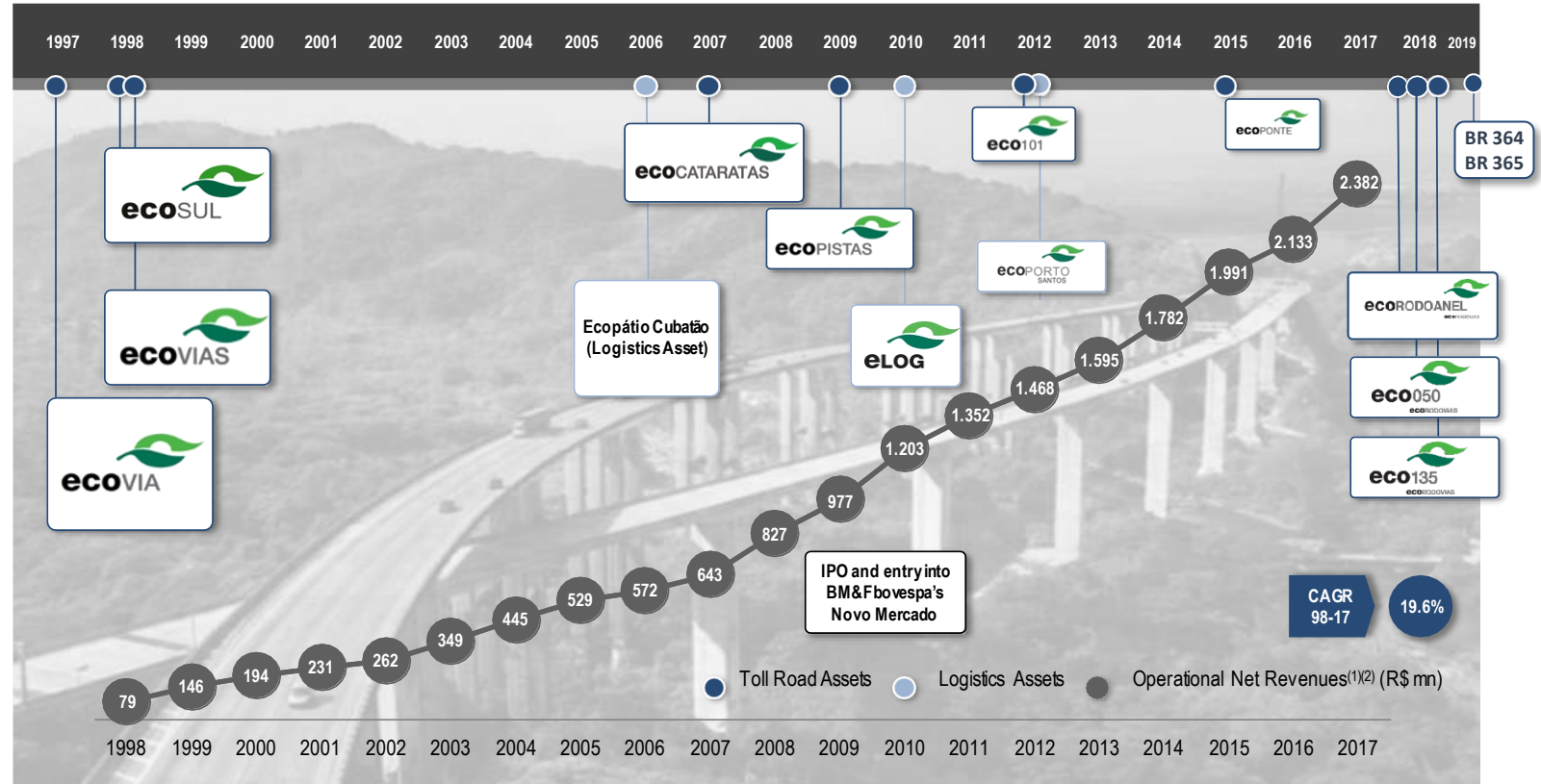
~290 million
Vehicles passed
through





The motorway network in Brazil

EcoRodovias is one of the **main players** in the infrastructure and concessions sector in Brazil, having added **11 assets** to its portfolio in the last 12 years.





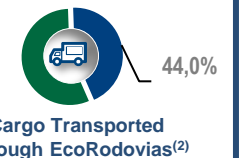
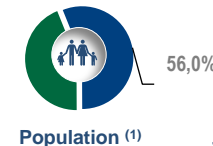
The motorway network in Brazil

EcoRodovias portfolio includes **11 highway concessions** with total of **3,086 km** and **one port asset** (Ecoporto) in eight different Brazilian States, located in the main trade corridors in the South and Southeast regions.



- **3,086 km** of roads under concession
- **Ecoporto** located in Port of Santos, the largest in LatAm

Geographic footprint concentrates 2/3 of Brazilian GDP, 1/2 of the country's population, and 1/2 of all the Brazilian cargo imported and exported



Source: IBGE 2017 and Brazilian Ministry of Development, Industry and Foreign Trade

Notes:

(1) Considers the GDP and population of the states within the geographic footprint

(2) Volume share of Brazilian cargo imported and exported transported through EcoRodovias' toll roads influence zone as of 2017 (i.e. not considering Ecoponte)



The motorway network in Brazil: portfolio

Company	Concessions	Stake %	Km	Maturity	FY19 EBITDA (R\$m)	vs 2018
ECOVIAS dos Imigrantes	San Paolo-Porto Santos	100%	177	Jun – 26	780,4	+1,5%
ECOPISTAS	San Paolo-Vale do Rio Paraiba	100%	144	Jan – 39	218,3	+9,6%
ECOVIA Caminho do Mar	Curitiba-Porto Paranagua	100%	137	Nov – 21	209,6	+3,3%
ECOCATARATAS	Paraná-“Tripolborder”	100%	387	Nov – 21	245,8	+11,1%
ECOSUL	Pelotas-Porto Alegre-Porto Rio Grande	100%	457	Mar – 26	237,6	+11%
ECO101	Macuri/Ba-Rio de Janeiro border	100%	476	May – 38	82,4	-12,8%
ECOPONTE	Rio de Janeiro Niteroi-State of Rio de Janeiro	100%	23	May – 45	80,6	-2,6%
Eco - 135	Montes Claros	100%	364	Jun – 48	119,5	n.m.
Eco - 050 (MGO)	Minas Gerais Goias	100%	437	Jan – 44	70,3	n.m.
ECORODOANEL	San Paolo Northern Ring Road	100%	48	Dec – 50 ¹	(0,4)	n.m.
ECOVIAS do Cerrado (BR – 364/365)	Jatai – Uberlandia	100%	437	Jan – 50	--	n.m.
Total			3,086			



Itinera Key Figures 2019



€ 985 million
Revenues



€35 million
EBITDA



€4.4 billion
Backlog
of which
60% abroad



~5,600
Employees





Itinera main project references




ROADS AND INFRASTRUCTURES

ROADS

- RA 243 – Abdaly highway Interchange regional road, (Kuwait) *in progress*
- Belt Parkway and Interchange over Ocean Parkway *completed* 
- Kew Gardens Interchange *in progress* 
- External East Ring Road of Milan (Italy) *completed*
- Highway Junction Brescia-Bergamo-Milano (Italy) *completed*
- Highway A33 Asti-Cuneo (Italy) *completed*
- Highway Pedemontana Lombarda (Italy) *completed*
- Modernization of Highway A7 Milano-Serravalle (Italy) *completed*
- Modernization of Highway A4 Turin-Milan *completed*
- I-287 Cross Westchester Expressway-New York *completed* 
- Hutchinson River Parkriver-Bronx *completed* 

BRIDGES

- Okavango River Bridge (Botswana) *in progress*
- Marchetti Viaduct A4/A5 Santhià-Ivrea (Italy) *completed*
- Meier Bridge Alessandria (Italy) *completed*
- Storstrøm Bridge (Denmark) *in progress*
- Skurusund Bridge (Denmark) *in progress*
- Alexander Hamilton Bridge Rehab. *completed* 

TUNNELS, HYDRO AND UNDERGROUND WORKS

- Sewage System Collectors In Turin (Italy) *in progress*
- Aquarium of Genoa - new dolphin pool (Italy) *completed*
- Frejus tunnel-Bardonecchia, Turin (Italy) *in progress*
- Zogno tunnel-Bergamo (Italy) *completed*
- Avigliana tunnel, Turin (Italy) *completed*
- Brenner tunnel (Italy) *in progress*
- MTA 7-Line Extension Ventilation Project *completed* 
- Zayed Road Network In Mina Zayed Area (EAU) *in progress*



RAILWAYS AND METROS

RAILWAYS

- High-Speed Railway Line Na-Ba, Canello-Frasso (Italy) *in progress*
- High-Speed Railway Line Na-Ba, Frasso-Telese (Italy) *in progress*
- High-Speed Railway Line Na-Ba, Telese-Vitulano (Italy) *in progress*
- NYCT Stillwell Passenger Terminal *completed* 
- High-Speed Railway Line To-Mi (Italy) *completed*
- High Speed Railway, stretch Treviglio-Brescia (Italy) *completed*
- Maintenance rolling stock plant in Camnago, Monza (Italy) *completed*
- MTA Long Island Railroad Third Track *in progress* 
- MNR Yankee Stadium Rail Station *completed* 

METROS

- Underground, Collegno - Torino Porta Nuova lot 3 line (Italy) *completed*
- Underground, Collegno - Torino Porta Nuova lot 5 line (Italy) *completed*
- Naples Line 1 Underground (Italy) *completed*
- NYCT South Ferry Terminal *completed* 





Itinera main project references



HOSPITALS

Odense Hospitals – Denmark *in progress*

Køge Hospitals – Denmark *in progress*

New Children Hospital A. Mayer - Florence (Italy) *completed*

“E.Agnelli” Hospital - Pinerolo, Turin (Italy) *completed*

Enlargement of the Polyclinic Hospital - S. Donato Milanese (Italy) *completed*

Rehabilitation Center Borsalino 2000 - Alessandria (Italy) *completed*

Institute of Stem-cell Biology, Regenerative Medicine and Innovative Therapies, Foggia (Italy) *completed*

“San Raffaele” Hospital - new surgical hospital and emergency center - Milan (Italy) *in progress*



BUILDINGS

Reem Mall – Abu Dhabi) *in progress*

Carrefour Shopping Center «Street of Hunters», Turin (Italy) *completed*

New Court of Justice - Vicenza (Italy) *completed*

University Residence in Turin (Italy) *completed*

University Campus In Grugliasco, Turin (Italy) *in progress*

Tobacco Factory Milan Lots A and B (Italy) *completed*

New University Campus Einaudi, Department of Political Science and Law - University of Turin (Italy) *completed*

Shopping Center of Arese, Milan (Italy) *completed*

Multifunctional center for Programme Agreement ex FIAT/Alfa Romeo in Arese and Lainate - Milan (Italy) *completed*



AIRPORTS

Expansion and Renovation of the departure Terminal at Verona «Valerio Catullo» Airport (Italy)) *in progress*

Terminal 1, 3 and Satellite C of Milano Malpensa Airport (Italy) *completed*

Passengers Terminal Orio al Serio Airport – Bergamo (Italy) *completed*

Cargo City, urbanization works at Milano Malpensa Airport (Italy) *completed*

New Enac building with connecting walkway at Milano Malpensa Airport (Italy) *completed*

Arrivals plan and check - in area restyling, at Terminal 1, Milano Malpensa Airport (Italy) *completed*

Runways, aprons and hangar construction at Marco Polo Airport, Venice (Italy) *in progress*

JFK Airport (American Airlines Terminal 8 and 9, British Airways Terminal 7, Terminal 4) *completed*





US market: Halmar International

Itinera operates in the USA market through **Halmar International**, one of the leading construction companies operating in the New York City area.

This operation enables the Group to develop its activities in the US, both as an **EPC Contractor** (Engineering, Procurement & Construction) and through the development of existing **Private Public Partnership** (PPP) infrastructure programs, through the know-how and qualifications gained by the Group in Italy and around the world in the design, implementation and management of **highly complex projects**.

The **US market** offers considerable potentialities, represented by **complex works** with significant **added value**, where **experience**, **skills** and **technological innovation** are seen as **key factors** in success and competitiveness.





US market: Halmar International

Leader in the realization of Design-Build projects.

One of the **top 5 construction companies** in the New York City area.



Airports



Subways



Railways



Motorways



Bridges



~ \$1 bn
Backlog



+50 years
of activity



Installations for external clients (extra-captive)

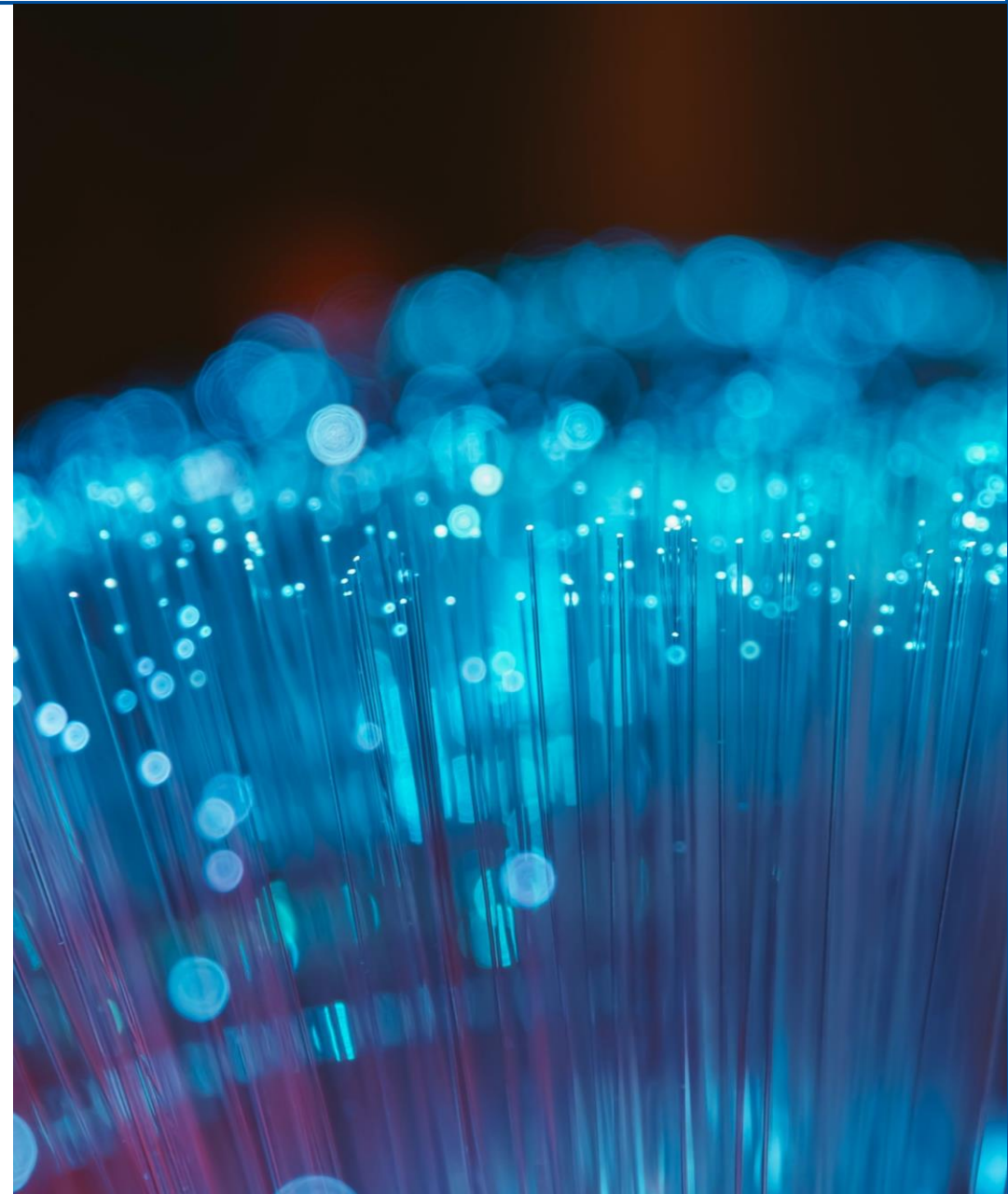
- Design of installations in the area of **civil, commercial, industrial, energy efficiency, hospital installations**, also in collaboration with Itinera

Global service and installations (captive)

- Design, set up and global service of **technological installations** (electrical, thermal and mechanical and SCADA - Supervisory Control And Data Acquisition), to serve infrastructures

Electrical cabinets, services and public lighting

- Design and production of **electrical cabinets**
- Development and implementation of new technologies in the field of **public lighting**

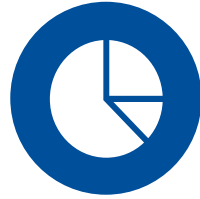




Euroimpianti Key Figures 2019



- € 74M Revenues
- €126M Backlog



- 35% captive highways
- 65% other business



- ~120 Employees



Operates in **Italy**,
France and **Romania**



- Created in **1982**
and acquired by
the Group in **2003**



- ~10 **certifications**
including
**ESCo (Energy
Service
Company)**

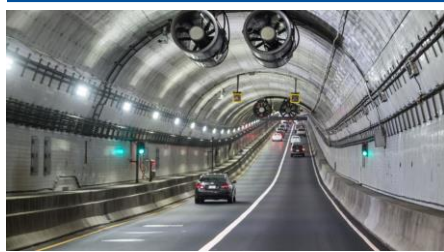




Roads / Highways



Bridges / Tunnels



Railways



Investment Planning, Design, and Work Supervision

Infrastructure Monitoring and Preservation

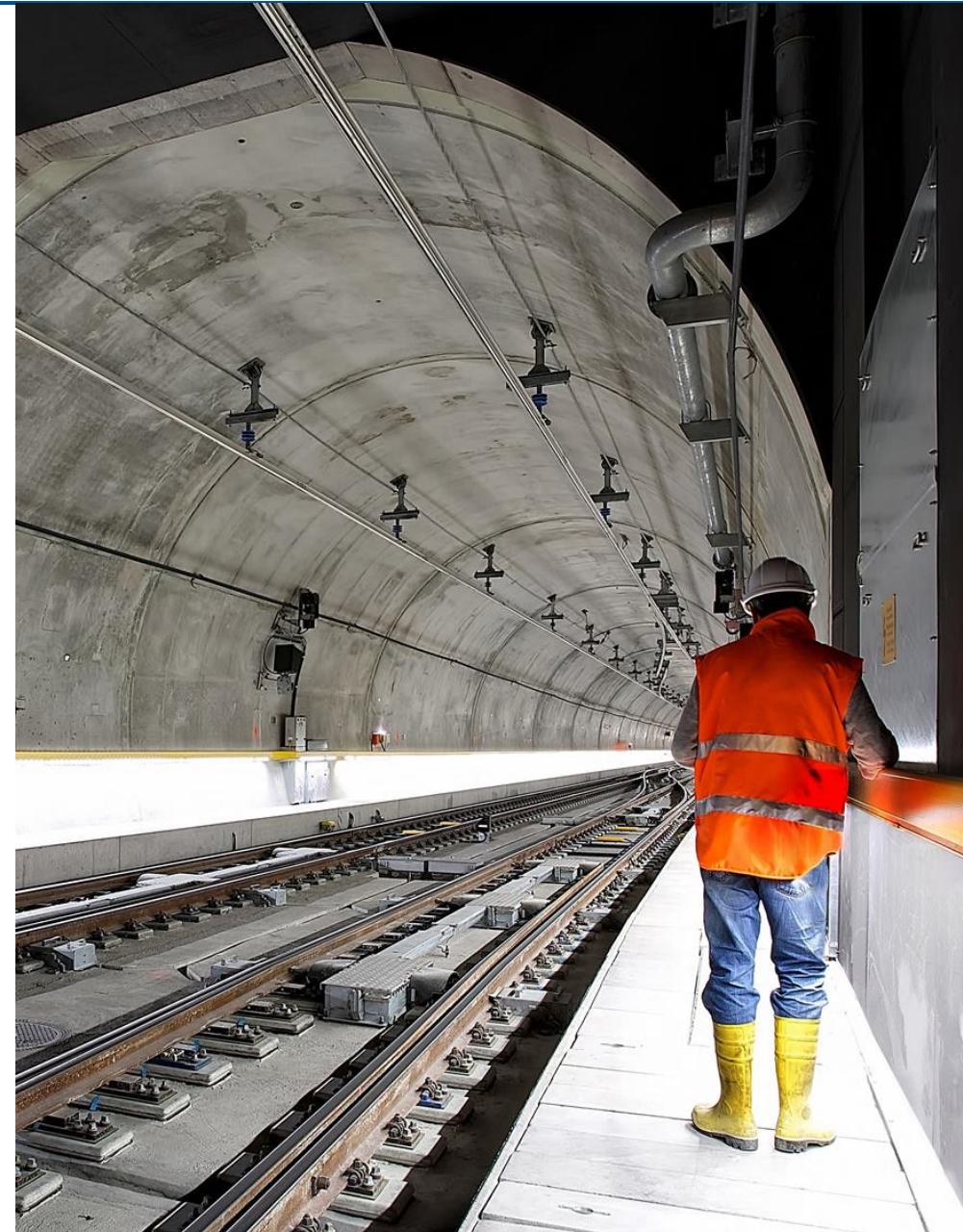
Health Safety & Environment

Technical Support in Tender and Contract Management

Research & Development

**SINA chair of the World Road Association
for programs and policies on road safety**

**SINA member of the European ITS Platform
with the role of Project Manager**





Sina Key Figures



€ 51 million
Revenues



€ 10 million
EBITDA



€ 64 million
Backlog



~ 230
Employees



- **Among the top 5 engineering companies in Italy**
- **Best in class** in infrastructure monitoring and preservation





Sinelec is a leader in the research, design, installation and maintenance of **advanced systems for managing data regarding mobility and transport**, collected at the company's **Data Center** and analysed using **Advanced Analytics models**.

The company's main activities are connected to **ITS** (Intelligence Transport Systems), to cutting-edge **toll collection systems** (in line with European directives) and to telematic systems for **monitoring traffic and increasing safety**, with a particular focus on the development and implementation of new technologies dedicated to **vehicle safety** and **assisted driving**.

The company has its own **WAN** (Wide Area Network) **telecommunications network**, and creates the infrastructures, ICT services and information systems for Group companies.





Sinelec Key Figures



€ 75M Revenues
€ 13M EBITDA
€103M Backlog



80% captive
20% extra-captive



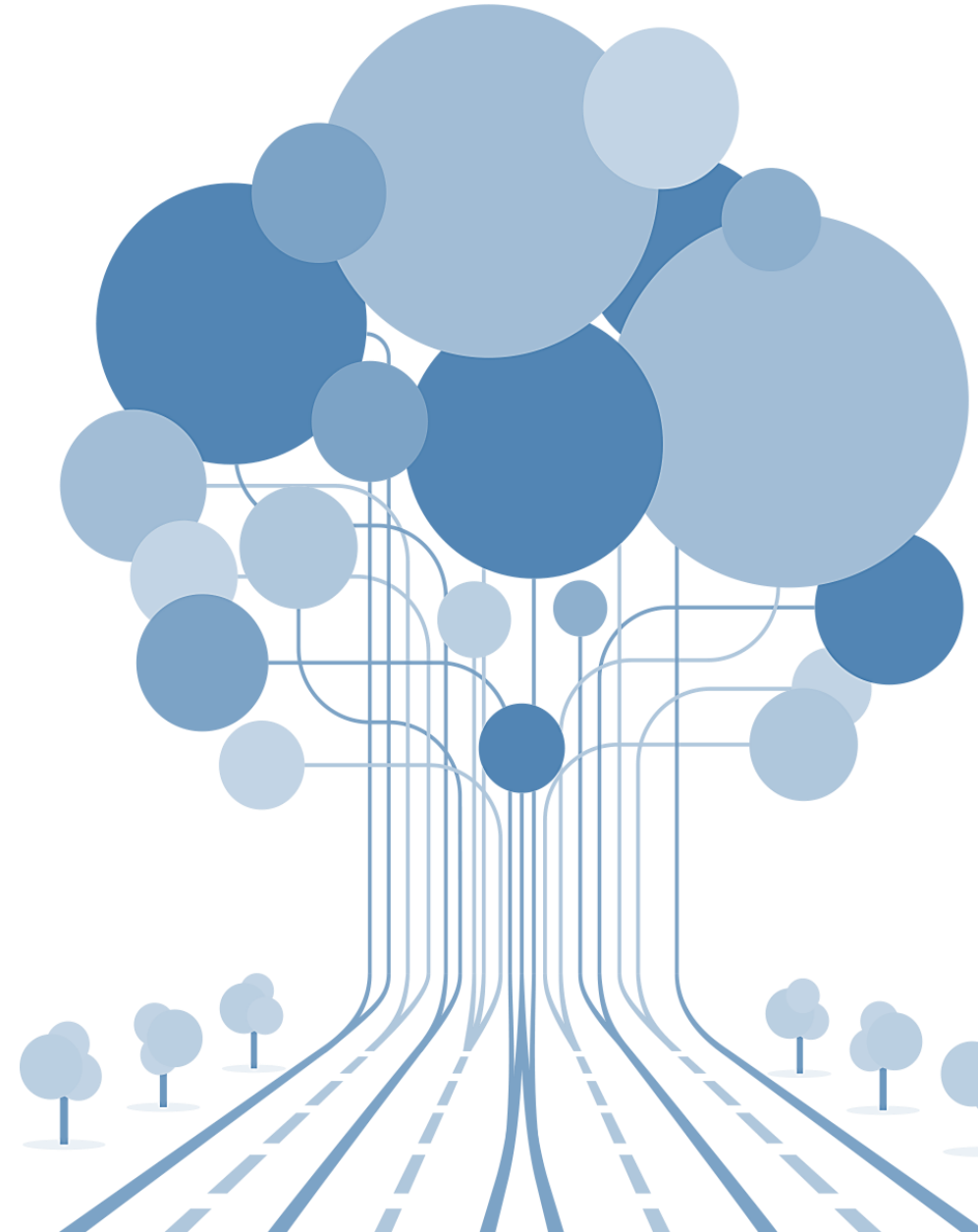
~290
Employees





Agenda

- Financial Figures
- **ESG Strategy**
- 2019 Sustainability Report





Why sustainability?

ASTM is committed to operate through a **responsible approach**, progressively integrating sustainability into the business model



Continuous improvement

- **Our performances in the medium-long term** benefit the impacts of a **continuous improvement approach**



Competitiveness

- Our ability to manage the business in a **sustainable way** makes us **more competitive** both on the **domestic and international markets**



Transparency

- **Clear internal and external communication** regarding strategic objectives, values and policies **enables effective and long-lasting relationships with our Stakeholders**
- Spreading a corporate culture based on **shared goals, principles and values**, strengthens employees' motivation and sense of belonging



Monitoring

- **Non-financial reporting reinforces the monitoring processes of our ESG performances** and permits benchmarking with our peers



The pillars of our sustainability strategy



Corporate Governance aligned with ESG best practices



Sustainability plan 2017-2021



Remuneration system linked to sustainability objectives



Transparent and active engagement with Stakeholders



ESG Risks integrated into the **Risk Management System**



Policies, procedures and management systems for material ESG topics



Creation of **shared value** with all Stakeholders



Sustainability reporting in accordance with GRI Standards and best practices

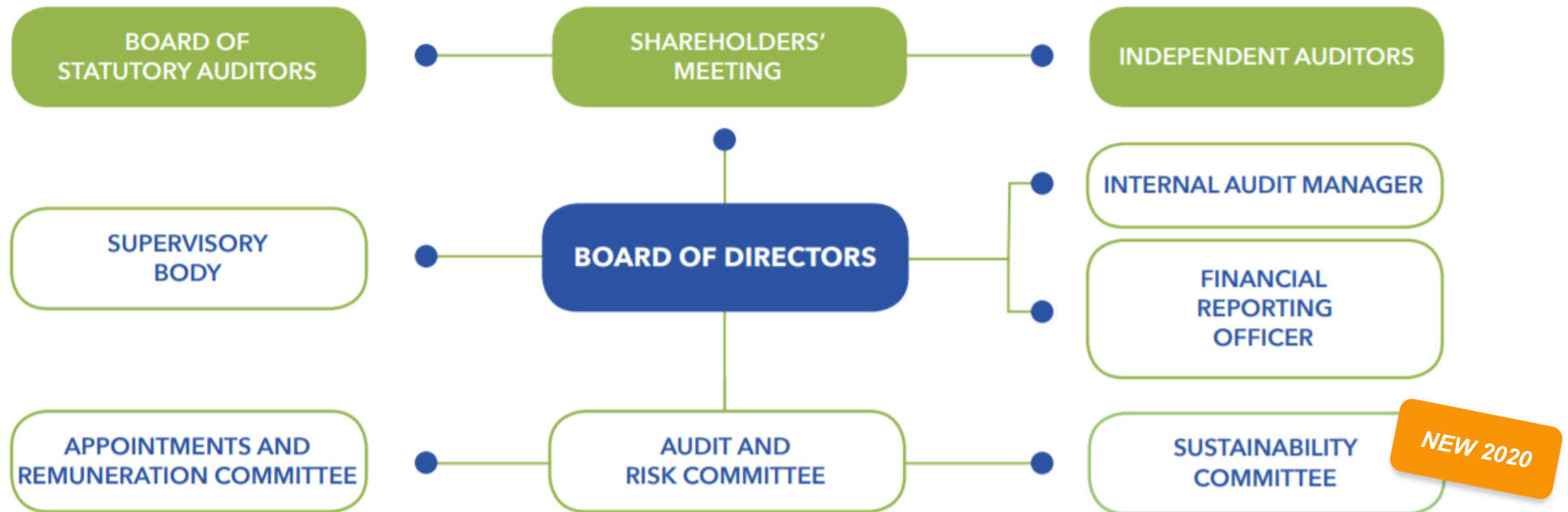
Being sustainable to create shared value for our Stakeholders in the medium-long term



Corporate Governance

ASTM defined the **corporate governance for sustainability topics** formalizing roles and responsibilities:

- The **Board of Directors** defines the strategic guidelines to create shared value for all Stakeholders in the medium-long term, approves the Sustainability Plan and the Sustainability Report.
- On February 18, 2020 the Board of Directors established among its members the **Sustainability Committee** composed of three independent directors, with the main task of supervising the sustainability matters, task previously assigned to the Audit and Risk Committee.





Corporate Governance



Board of Directors composition

15 Directors with different background to guarantee a valuable mix of skills:
9 men and 6 women
4 between 30 and 50 years, 11 over 50 years



Gender Balance

ASTM Bylaws ensures in the composition of corporate bodies the respect for **gender balance** in accordance with applicable legislation and best practices



Independence

ASTM Bylaws ensures in the **Board of Directors an adequate number of independent directors** in accordance with applicable legislation and best practices: **11 Directors are independent** pursuant to the Testo Unico della Finanza (TUF) and the Corporate Governance Code



Minority Shareholders

ASTM Bylaws ensures the possibility for **minority Shareholders** to appoint directors and statutory auditors through the slate mechanism. In addition, the Shareholders' meeting regulation defines rules for meeting attendance



Remuneration

The ASTM **remuneration policy** provides both short (MBO) and long (LTI) term incentives. Since 2019, some objectives were linked to **sustainability topics**



**INTEGRATED
GOVERNANCE
INDEX**

The Integrated Governance Index (IGI) is a quantitative index involving **Italy's top 100 listed companies**. In 2019 ASTM was in **third place** in the IGI ranking dedicated to industry.



Sustainability plan 2017-2021

The ASTM Sustainability Plan 2017-2021 «**Going Global Sustainably**» is integrated with the Strategic Plan and identifies the following strategic areas:

Implement Sustainable Governance in line with best practice	Develop human capital by promoting skills and different cultures
Create sustainable value for all Stakeholders over the medium-long term, safeguarding and enhancing the Group reputation	Ensure compliance with environmental regulations and promote energy efficiency policies
Promote policies aimed at improving road safety	Ensure health and safety in the workplace

The Sustainability Plan has been prepared considering several guidelines, including the **17 Sustainable Development Goals (SDGs)**, 10 Principles of the **United Nations Global Compact** and **ISO 26000 Guidelines**.

In particular, the following **9 SDGs** have been considered as the most relevant for the Group:



SDG 9: *Build resilient infrastructure, promote inclusive and sustainable industrialization and foster innovation*

SDG 11: *Make cities and human settlements inclusive, safe, resilient and sustainable*



Stakeholder, materiality analysis and risks

Stakeholder map



Sustainability Risks



Main material topics

- Infrastructure safety
- Road safety
- Anti-corruption
- Occupational health and safety
- Attraction and developing human capital

Materiality analysis identifies aspects that have a significant impact on the economic, social and environmental performances and that could substantially influence the ratings and Stakeholders' decisions as material. The results of the materiality analysis are summarised in the materiality matrix also considering the topics defined in article 3 of Legislative Decree 254/16.



A focus on climate change risks is available in the 2019 Sustainability Report



Transparent and active engagement with Stakeholders

Aware of the **active role** it carries out in **local areas**, overseeing economic, social and environmental development, ASTM recognizes the importance of guiding its growth towards achieving company objectives that take into consideration the expectations and needs of all its Stakeholders. This means it is fundamental for the Group to foster **relationships in the short, medium and long term**, with a view to consolidating its current commitments and to defining its future actions.



Italian Sustainability Day

Annual participation to **the Italian Sustainability Day. Participation in July 2020** to the **fourth edition**, an event dedicated to the meeting and dialogue between businesses and investors on issues of sustainability, innovation and growth, organized by Borsa Italiana



Materiality Analysis

Annually the materiality matrix is updated with the contribution of Stakeholders. The **4th stakeholder engagement workshop** was held in September 2019 which involved approximately **120 internal and 120 external Stakeholders**



Attract young talents

Encounter with young talent to get in touch with the **professional expectations and ambitions of young people**.

During 2019 **S.I.N.A.** and **SINELEC** respectively participated in the "**Career Days**" organized by the University of Pavia and the Milan Polytechnic



Push to Open (P2O)

"Push To Open (P2O)" is the project promoted by the Group with the **Municipality of Tortona**, which involved **80 students** of the 4th and 5th year of the Istituto Carbone - G. Marconi and Scientific high school Peano

For the first time a focus on Sustainability was included among the topics covered during the call to analysts held on 15th of April 2020

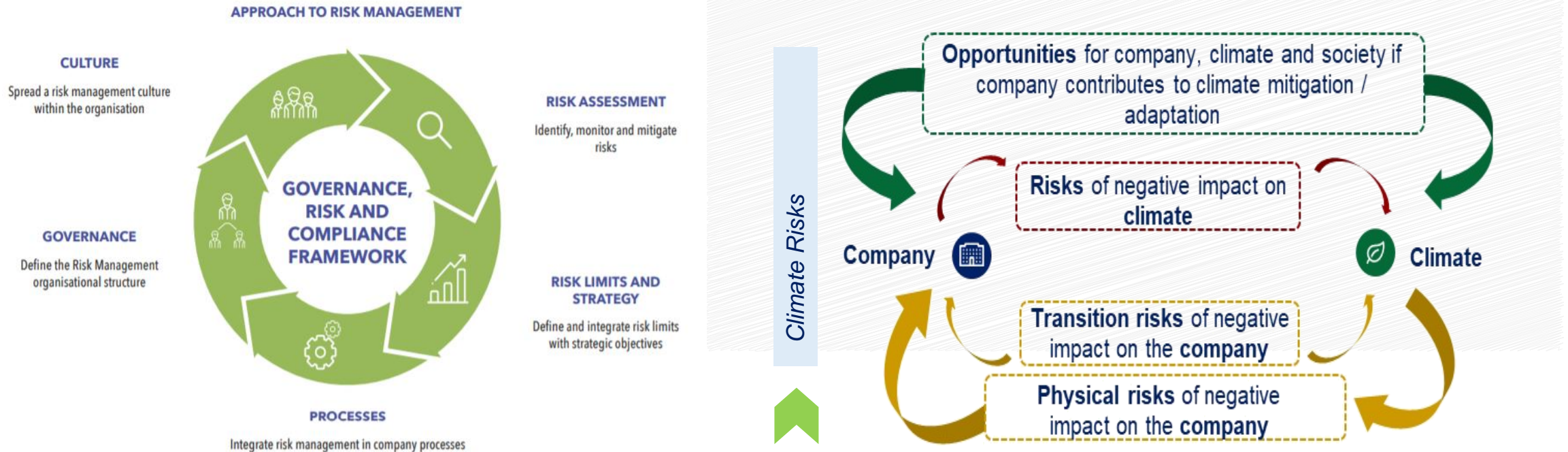


ConsumerLab has included the ASTM Group's Sustainability Report in the **2019 Future Respect Index**. The valuation criterion is based on the ability of the report to **engage consumers** and **make them aware** of the **sustainability culture**.



ESG Risks integrated into the Risk Management System

ASTM and its main operating subsidiaries have adopted a **Risk Management system** conforming to applicable best practices: risks connected with the attainment of strategic company objectives are assessed, including ESG risks.



Crisis management and COVID-19

In November 2019 ASTM adopted an operational procedure for **crisis management**, promoting the adoption of a similar procedure by its main operational subsidiaries.

In February 2020 the **Team of Crisis Management of ASTM S.p.A** has been activated for the **epidemiological emergency caused by Covid 19**. In particular, communications and protocols were promptly disseminated to all staff with behavioural information and guidelines concerning the operating procedures.



Policies and procedures for material ESG topics

The following sustainability policies have been implemented:



There were no reports regarding breaches of the **Code of Ethics** during 2019.

As recent legal updates concerning **whistleblowing**, ASTM and its main operating subsidiaries adopted a system to report irregularities and potential offences committed by employees and third parties, to supplement the channels already set up for reporting to the Supervisory Body. No reports were received during 2019.

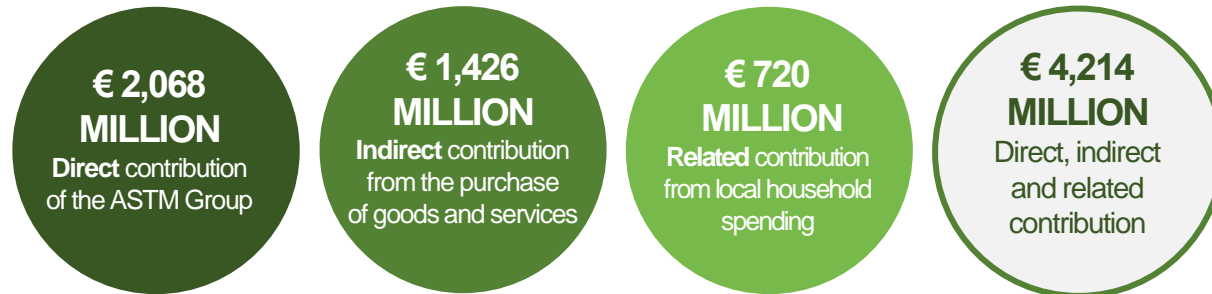


Creation of shared value with all Stakeholders

The Group, aware of the **economic and social impacts** produced by its business operations, has developed a calculation model to quantify direct, indirect and related 2019 contributions:



Economic impact



Impact on employment



Emergency COVID-19

In the first months of 2020, to support the COVID-19 health emergency, ASTM Group gave **€ 3 million** to benefit the Piedmont region and donated **two ambulances** to the Italian Red Cross.



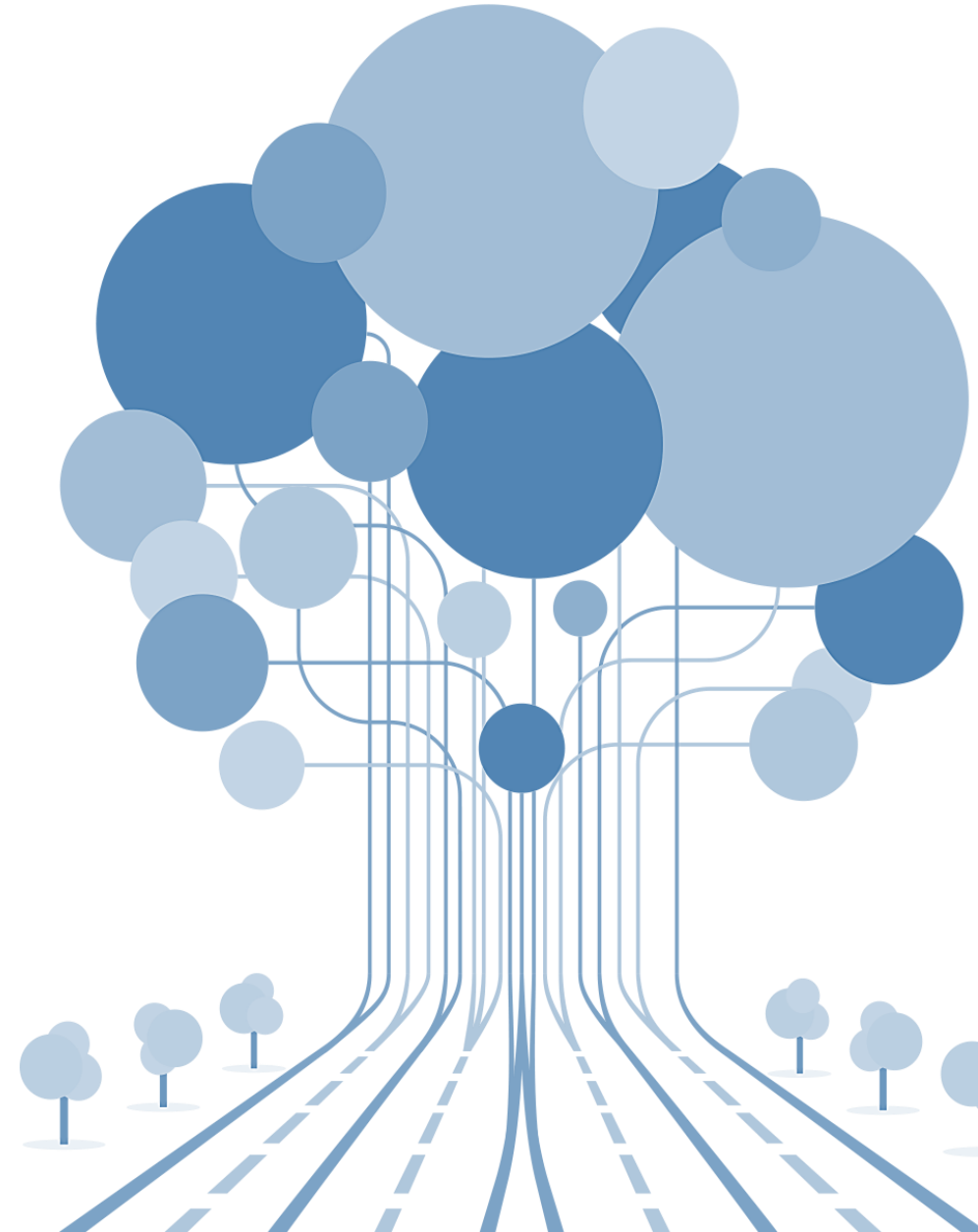
ASTM for sport

ASTM Group promotes **sport initiative**. Among the main sponsorships: the New Jersey Devils, Derthona Basket and CUS Torino Ad Maiora Rugby.



Agenda

- Financial Figures
- ESG Strategy
- **2019 Sustainability Report**





2019 Sustainability Report



On 14 April 2020 ASTM Board of Directors approved the fourth **Sustainability Report** for 2019, qualified as **Consolidated Non Financial Statement** pursuant to the **Italian Legislative Decree 254/2016**, which adopts the **EU Directive 95/2014** on disclosure of non-financial and diversity information. The 2019 Sustainability Report has been reviewed by Deloitte & Touche S.p.A. that issued a **limited assurance report** on 29 April 2020.

The 2019 Sustainability Report describes the initiatives and results in terms of sustainability performances relating to **ASTM S.p.A. and its subsidiaries consolidated with the “line-by-line method” in the 2019 consolidated financial statements***. As regards the scope of consolidation of the ASTM Group, data on **joint operations are reported in full**, without taking into consideration the percentage held.

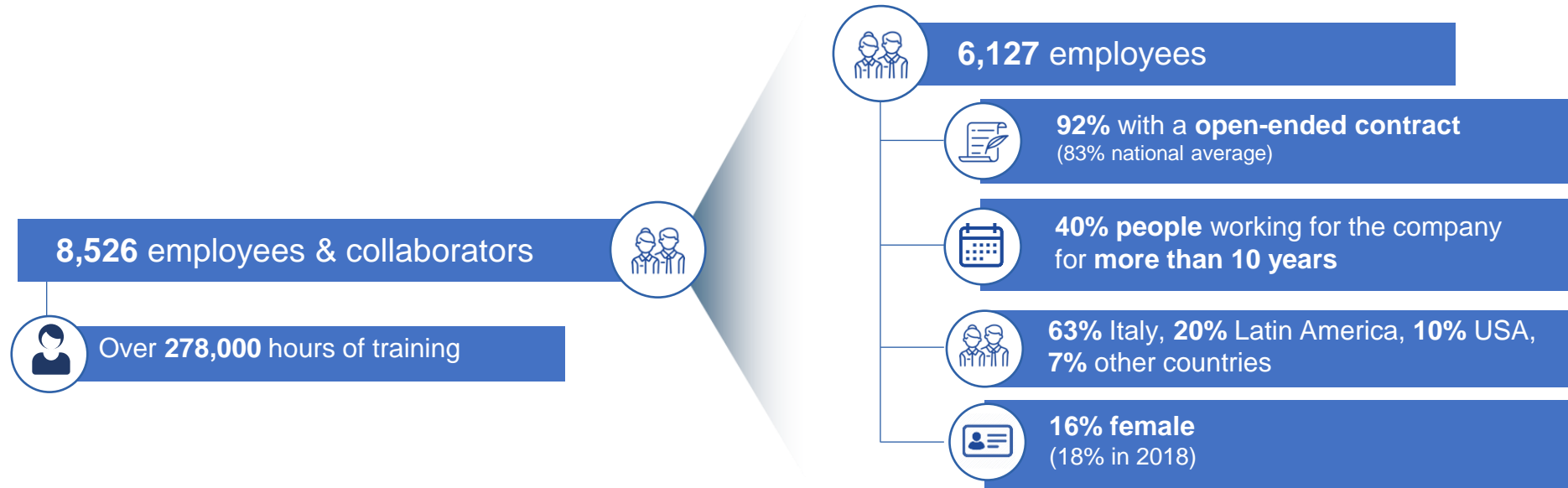
The ASTM Sustainability Report has been prepared in accordance with «**GRI Sustainability Reporting Standards**» (2016), based on the “in accordance-core” published by **Global Reporting Initiative (GRI)**. GRI Standards have been adopted as reporting framework by all Public Companies in Italy.



Itinera approved the second **Sustainability Report** for 2019 prepared on a **voluntary basis**. The 2019 Sustainability Report has been reviewed by Deloitte & Touche S.p.A. that issued a **limited assurance report** on 29 April 2020.



2019 Sustainability KPIs and activities



GHG emissions

Scope 1 - **43.176 tCO2**

Scope 2* - **50.329 tCO2e**
** Market Based*

Scope 2* - **41.849 tCO2e**
** Location Based*

- **ISO 37001** certified **Anti-Corruption** Management System for ASTM S.p.A. and Itinera S.p.A.
- **Customer experience program** aimed at analysing the service provided by the Group's motorway concessionaires
- **Training on sustainability topics** for about **120 managers**

Standard Ethics Rating
“EE-”
Positive outlook (EE+)

CDP Climate Change
“B”



2019 Sustainability Report



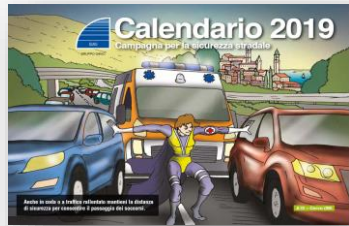
Italian concessions

2,118
employees

-67%
fatal accidents since 2001

€ 265 million
Motorway network investments
(€ 149 million in 2018)

732 km
Of draining/sound-absorbing road surface
70% of the motorway managed



The Group promotes safe and responsible driving behaviour through «**Autostradafacendo**» campaign to raise awareness among its customers also collaborating with the **Italian traffic Police** for educational activities in schools.

For more details refer to the dedicated website www.autostradafacendo.it

The Group's licensees have defined and adopted a method for the integrated process which **monitors the conditions of infrastructure**, provides **diagnostics** and defines **necessary measures**, to ensure the **safety, functionality, robustness and durability of works over time**.



Technology

308
employees

Smart Infrastructure
tender won for
A2, A90 and A91

IoT project
with a predictive approach

Recognition of Excellence "Gold"
of Certiquality



2019 Sustainability Report



EPC - Construction

5,625
Employees and
collaborators

over 247 thousand
of training hours for employees
and collaborators

**Building Information Modeling (BIM)
LEED (Leadership in Energy and
Environmental Design)**

- ✓ On a voluntary basis, additional information relating to health and safety KPIs of Itinera **subcontractors** have been disclosed in the 2019 Sustainability report
- ✓ Since 2017, Itinera has implemented a **supplier register** managed through an online platform for the preventive supplier qualification (mandatory for annual transaction greater than 10 thousand euros) that also consider ESG criteria. On December 31, 2019 there were **over 1,600 qualified suppliers** on the register
- ✓ In 2019, Itinera carried out **audits on suppliers** (10 in Italy and 11 abroad) to monitor their performances



EPC - Engineering

271
Employees

- ✓ **SINA** has consolidated know-how with reference to monitoring **infrastructure safety** and it is project manager of **European ITS Platform**, the European round table for ITS technologies (Intelligent Transportation Systems), and of the **European table for the monitoring of climate change impacts on infrastructures**

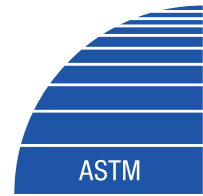


EPC - Procurement

149
Employees

- ✓ **Euroimpianti** developed know-how in the field of **energy saving projects** (for the captive and non-captive markets) including development of **public lighting** aimed at reducing energy consumption and light pollution





READY TO FACE ALL
NEW CHALLENGES